

Description

FDT floor diffusers are installed on the ground and can withstand the pressure of the human body and daily indoor maintenance mechanical equipment. They are divided into two types: aluminum and plastic. The wind direction adjustment disk is attached inside to adjust the airflow direction to achieve horizontal or vertical air supply. FB floor diffusers can be connected to the static pressure box or directly arranged on the raised floor. Floor diffusers are suitable for installation in places where it is not easy to arrange pipes on the top, such as the stands of stadiums, conference rooms, under the seats of large theaters, and computer rooms with raised floors. Common main materials: the panel is made of aluminum or plastic, the wind direction adjustment disk is made of polymer material, and the dust hopper is plastic.



Specification: $\Phi 100$ 、 150、 $\Phi 200$ 、 300

Example

SDV-FDT-V-SV-K-M

Specifications
 Static pressure box

Dust hopper:

SM: air volume regulating valve on the back

SV: Front air volume control valve is locked

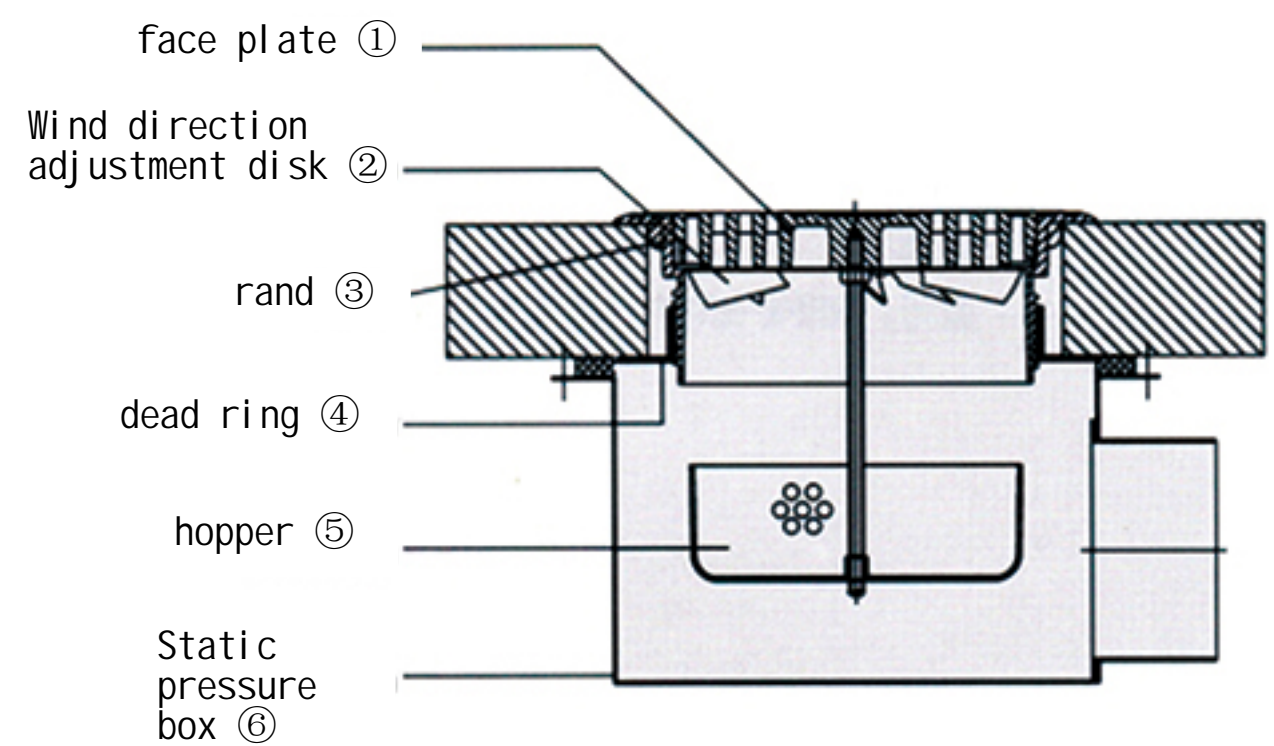
Wind direction adjustment plate

V: vertical

H: horizontal

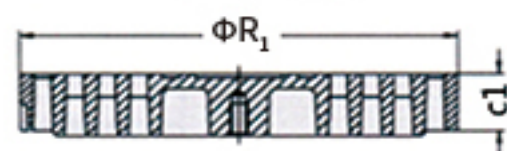
FDT(A) - aluminium front panel,

FDT (K) - plastic front panel



Structural dimensions

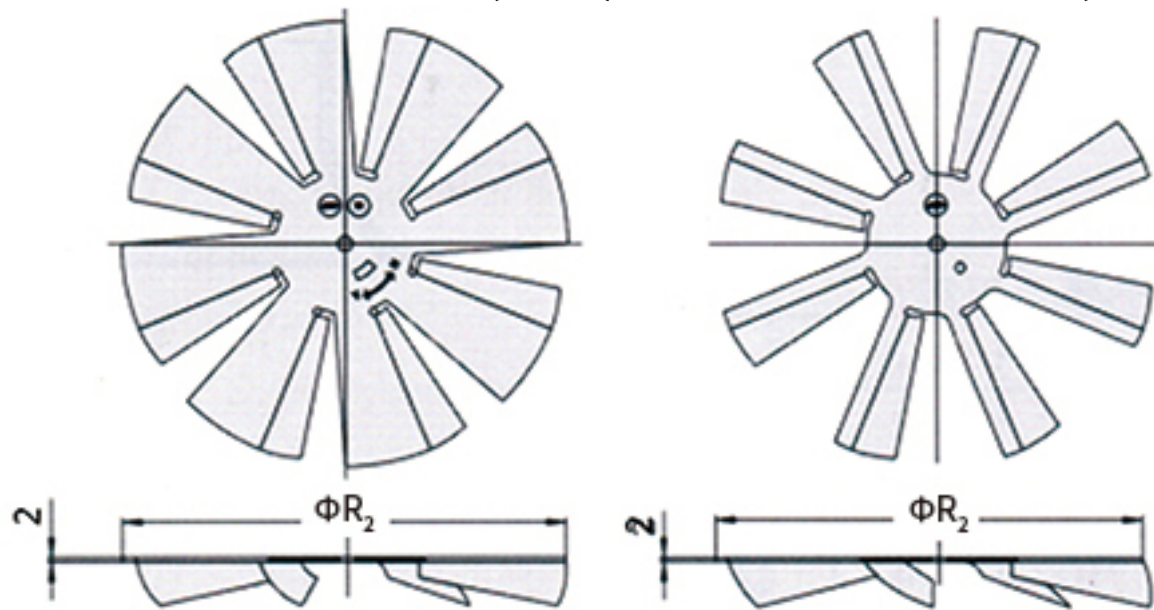
Type Panel FDT(A)/FDT(K)



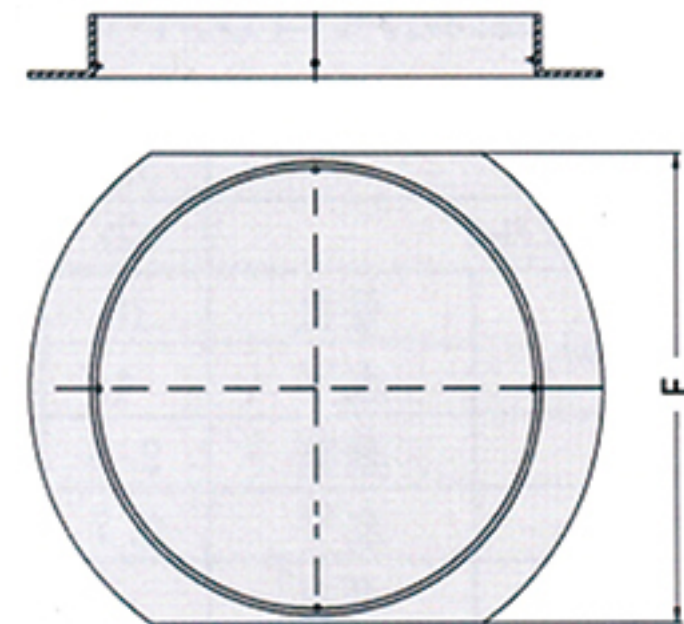
Fastening ring
 Suitable for floor thickness of at least 25mm



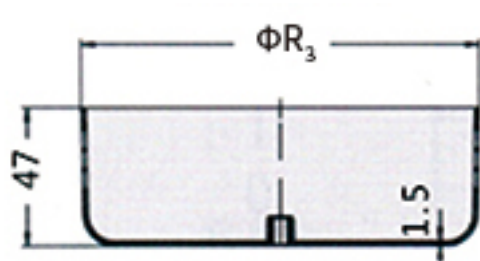
Wind direction adjustment plate
 Vertical/Horizontal(NV1H) Vertical-Fixed(V2F)



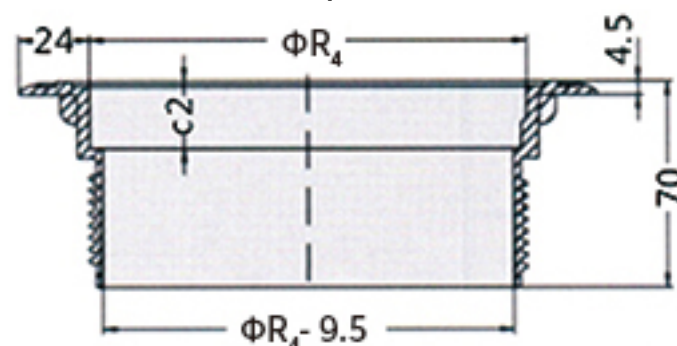
Fastening ring
 Suitable for floor thickness of at most 55mm



Dust hopper SM/SV



Clamp K



Static pressure box A

